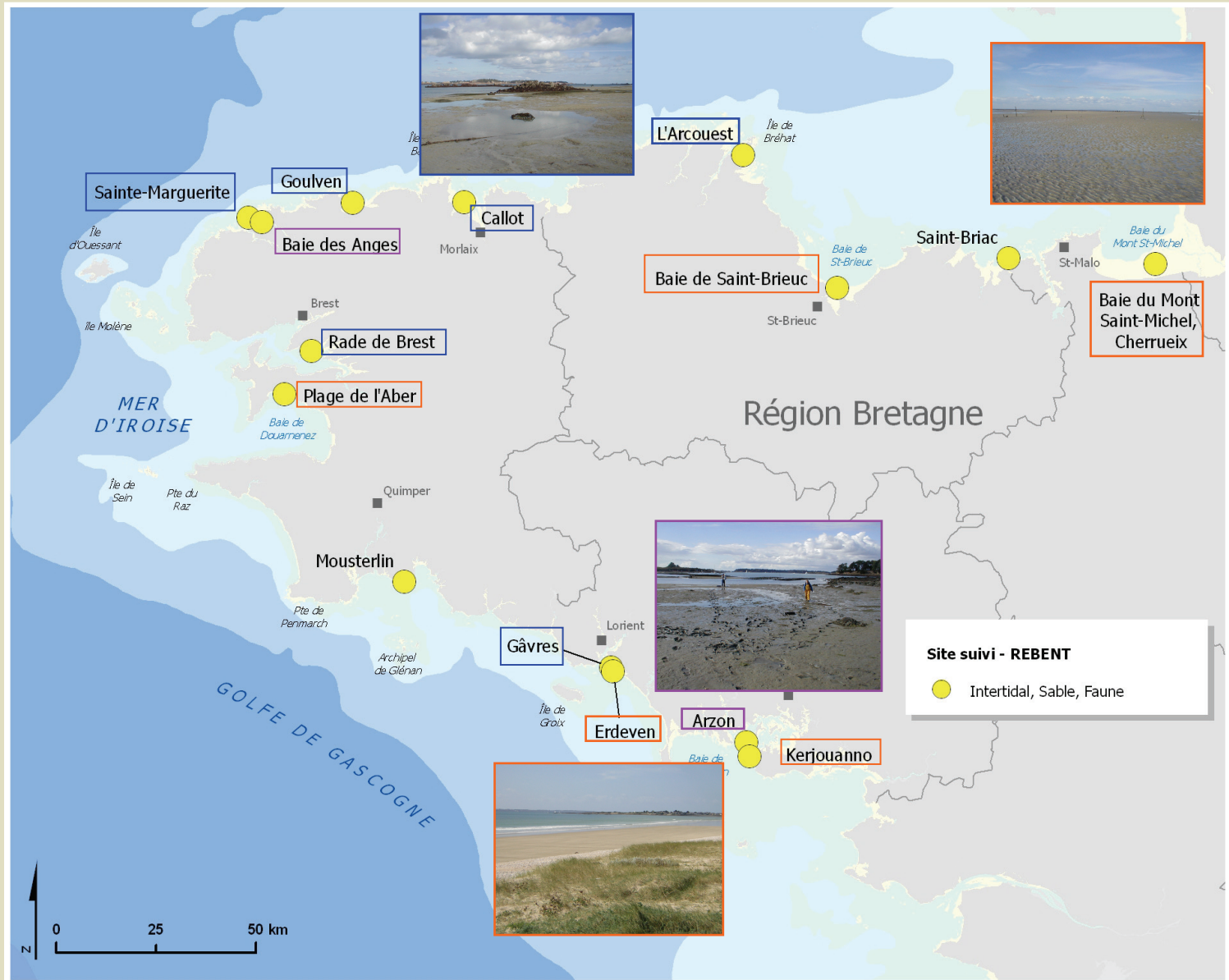


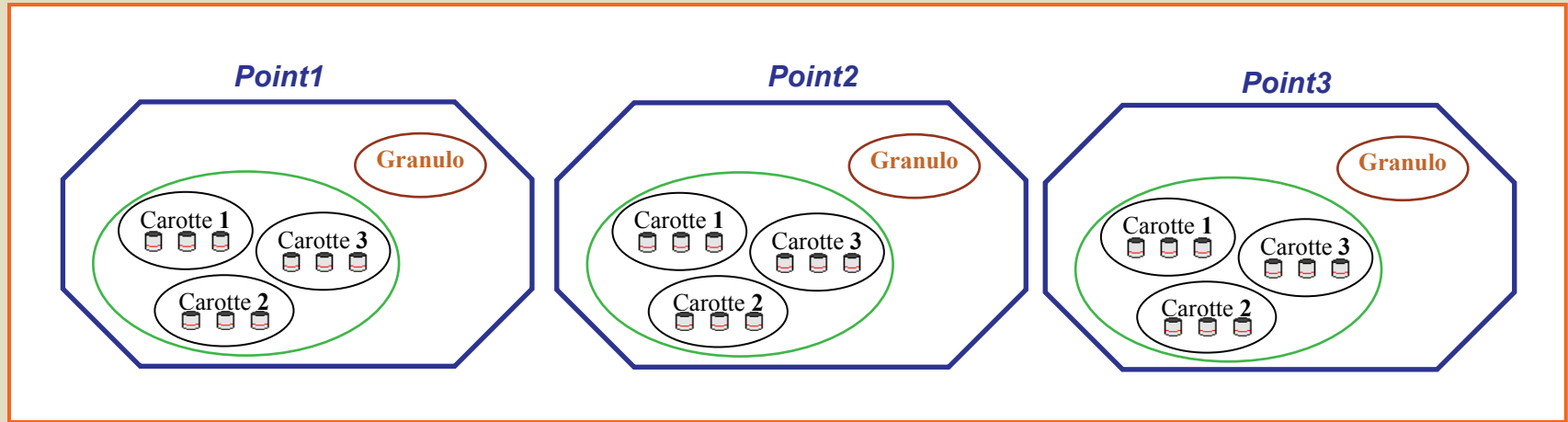
## Suivi de la Biodiversité - Les sables fins intertidaux -


***Anne-Sophie Barnay, Jacques Grall, Christian Hily, Benjamin Guyonnet, Marion Maguer,  
Michel Le Duf, Emilie Gauthier***





## Secteur A, Site A

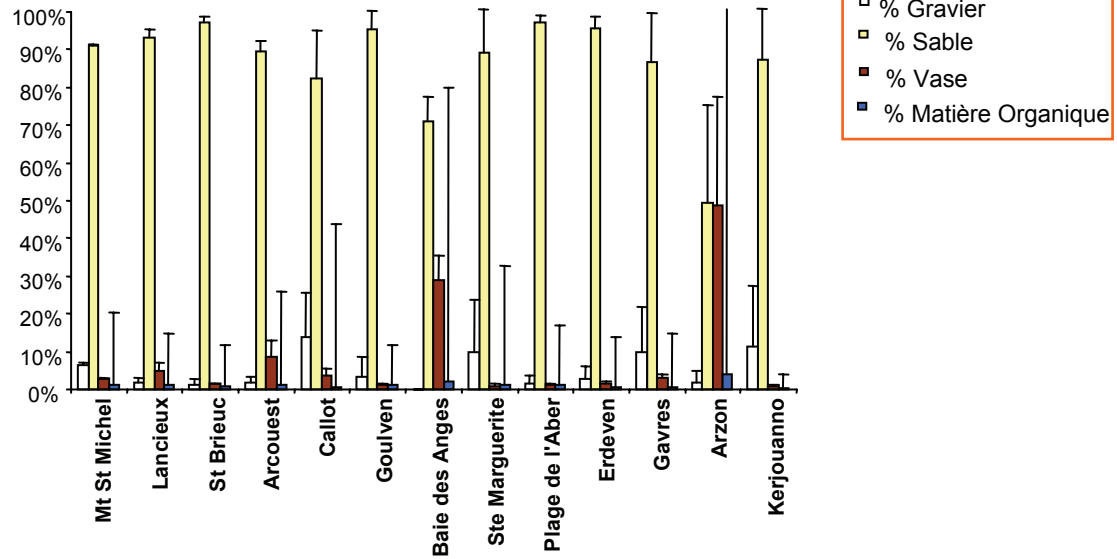
*Prélèvements in situ*
 **Macrofaune**

- carottier à main de 0.01 m<sup>2</sup> 
- tamisage sur 1 mm

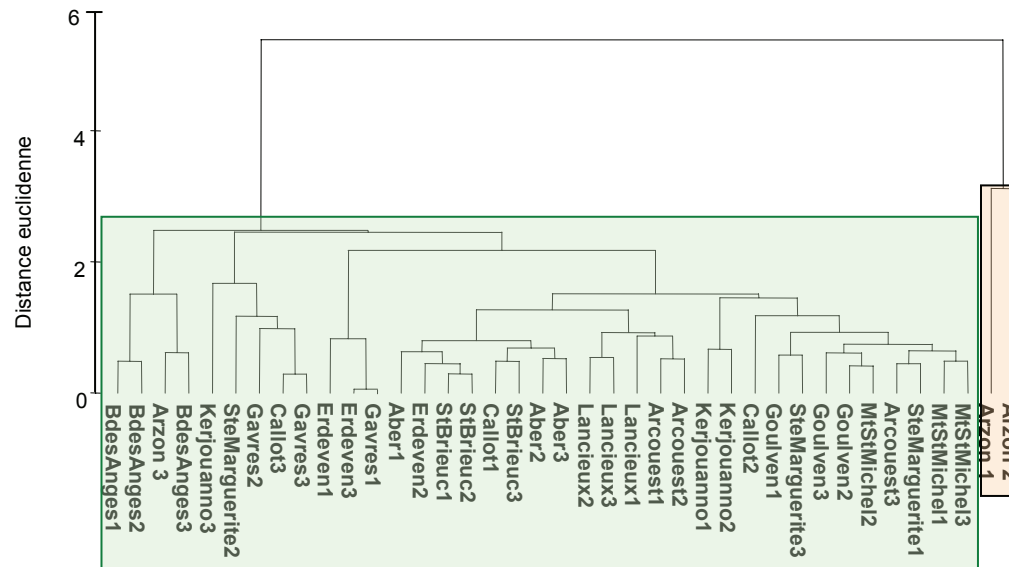
 **Granulométrie**

*printemps / automne*

□ Printemps 2004



Variables granulométriques: médiane,  $\sigma$ 1, SK1, % fines, % grossier, % sables, % MO



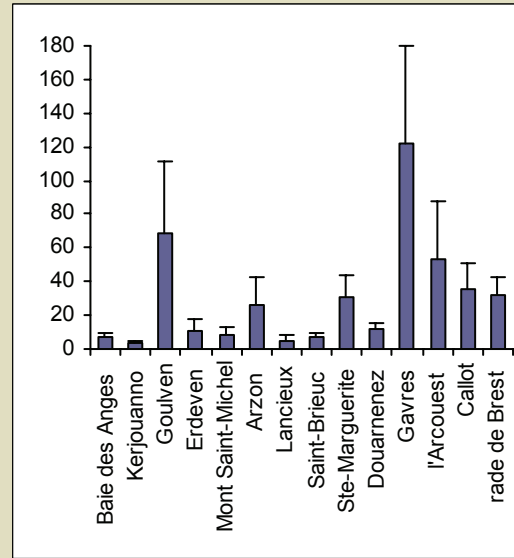
□ Printemps 2004

159 espèces (diversité  $\gamma$ )

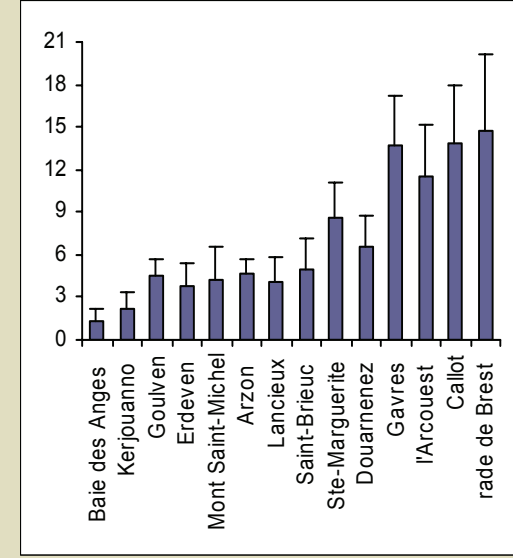


52,2 % Annélides  
19,5 % Crustacés  
20,7 % Mollusques  
3,7 % Echinodermes

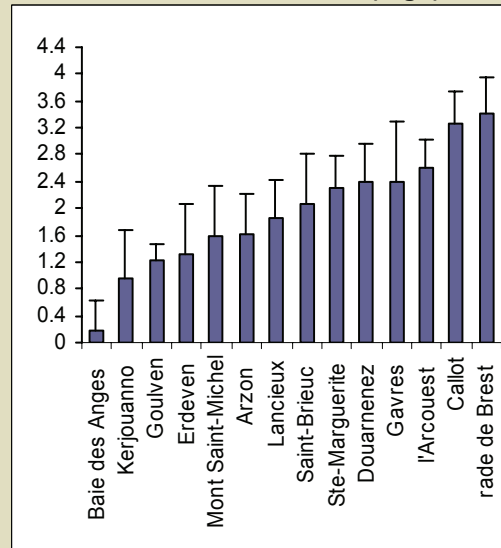
Abondance (individus.0,03 m<sup>-2</sup>)



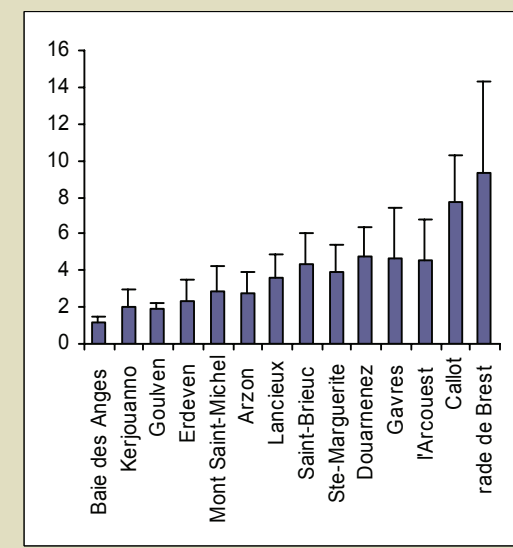
Richesse spécifique



Indice de Shannon  $H'(\log_2)$



Indice de Hill N2 (1/Simpson)



□ Automne 2004

**212 espèces (diversité  $\gamma$ )**



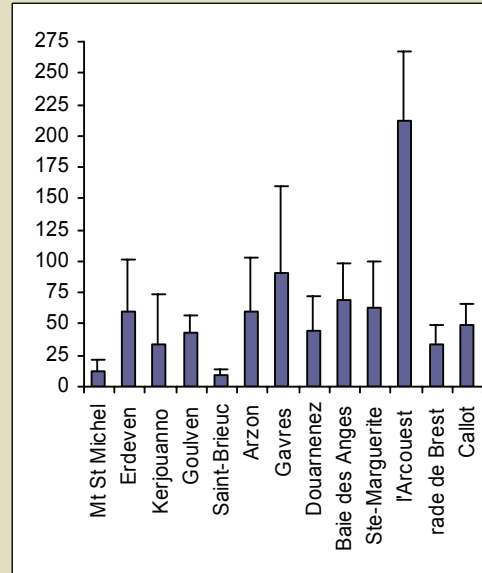
49,9 % Annélides

34,4 % Crustacés

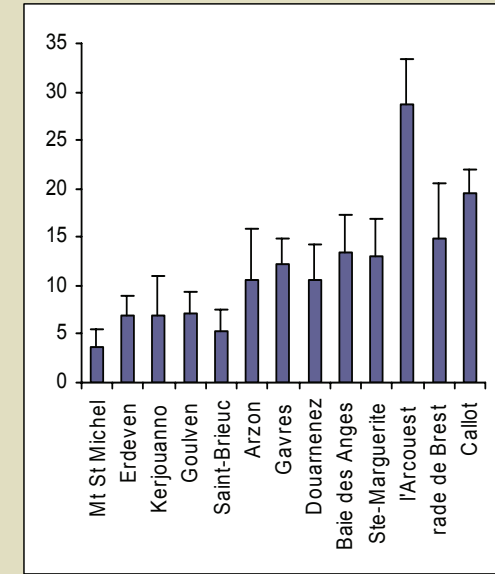
14,6 % Mollusques

3,3 % Echinodermes

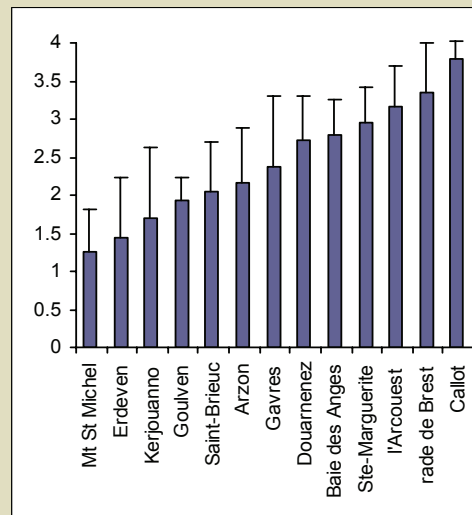
**Abondance (individus.0,03 m-2)**



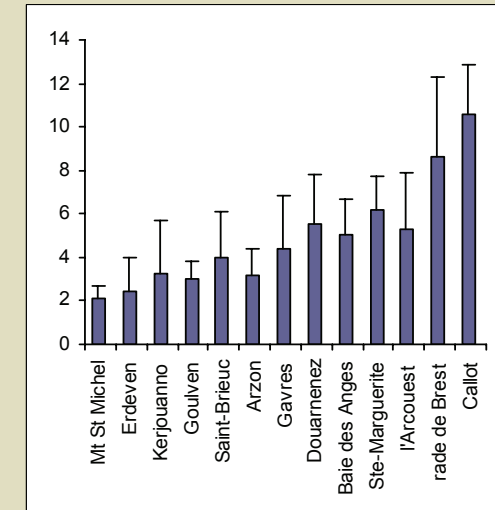
**Richesse spécifique**



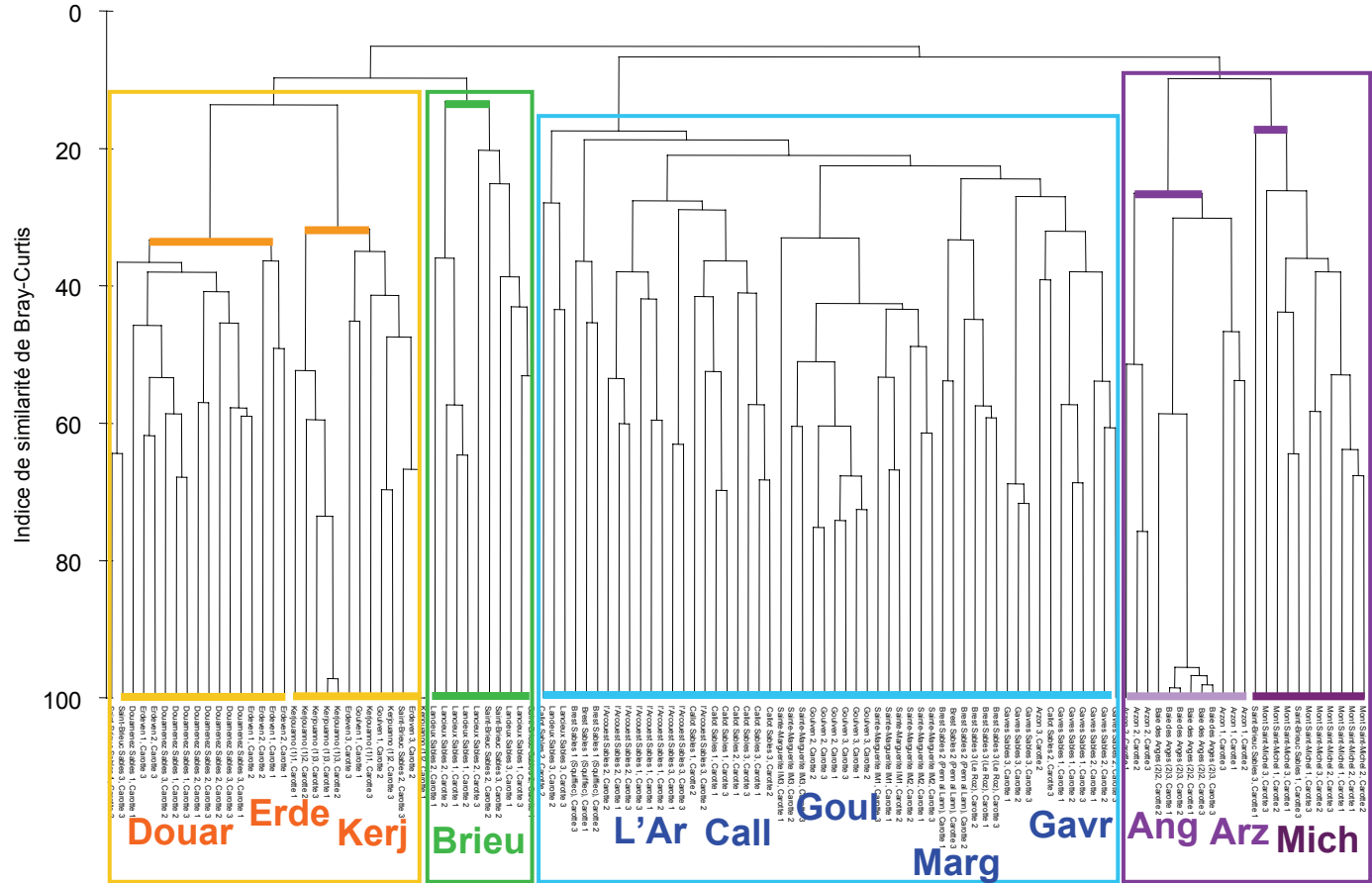
**Indice de Shannon  $H'$ (log2)**



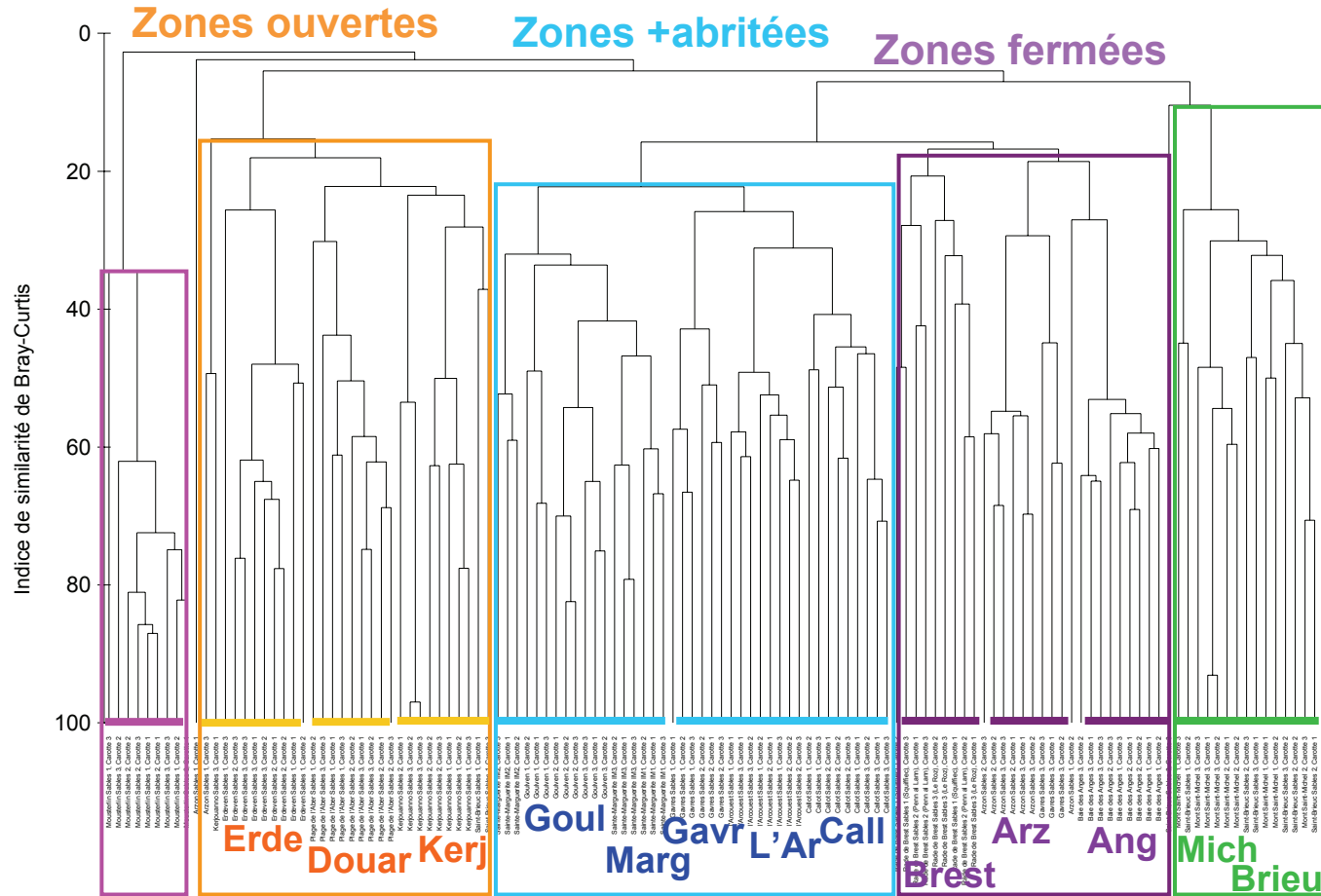
**Indice de Hill  $N_2$  (1/Simpson)**



□ Printemps 2004

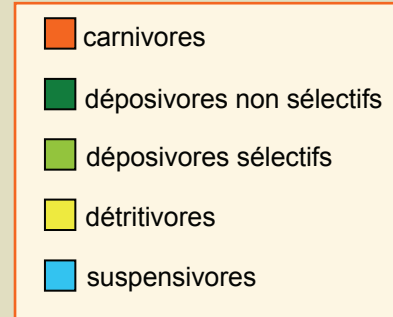
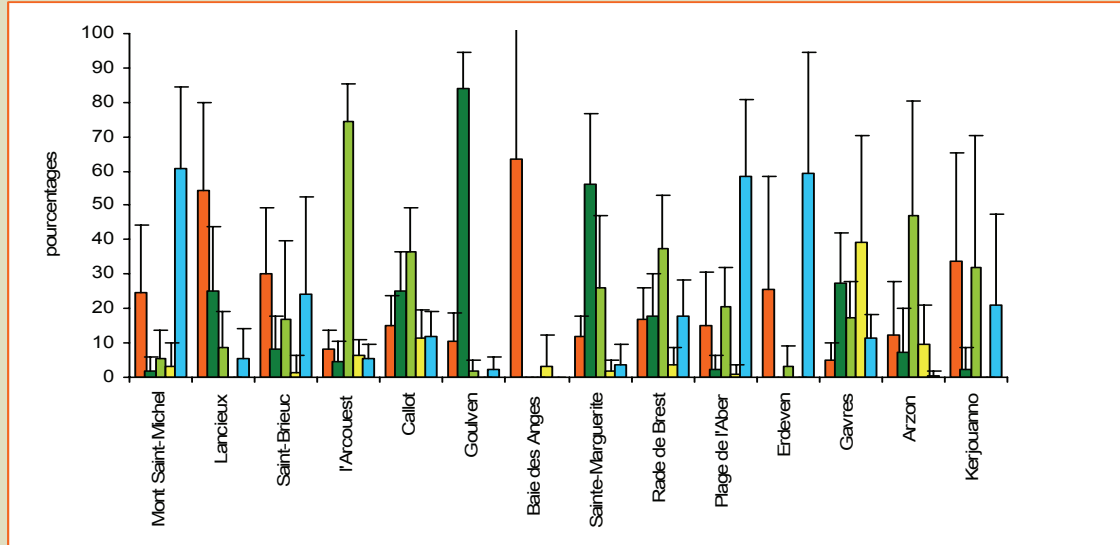


□ Automne 2004

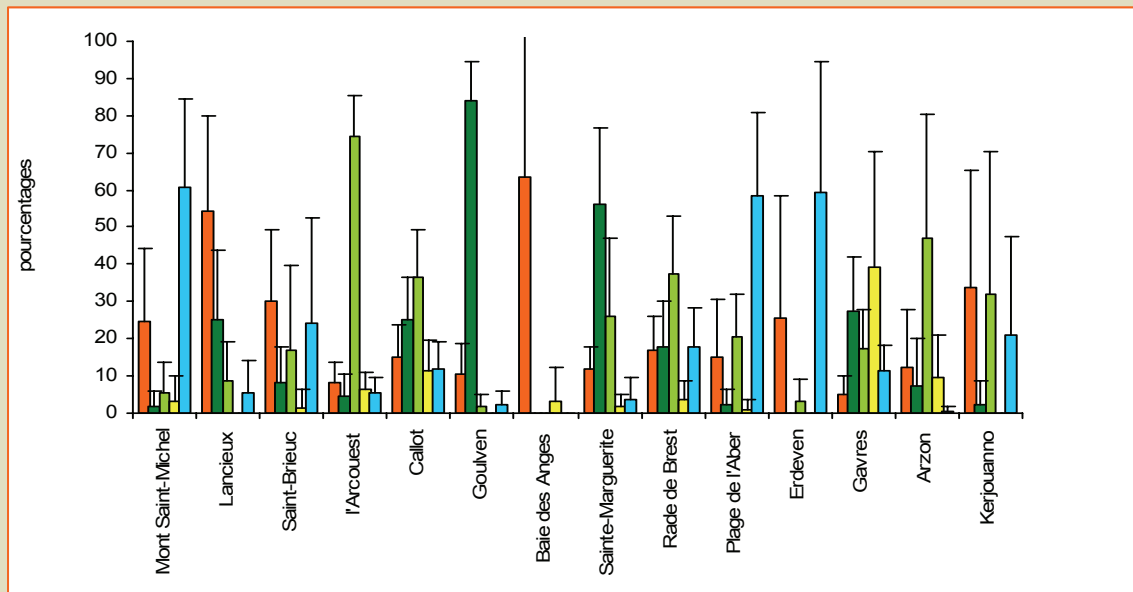




### □ Printemps 2004

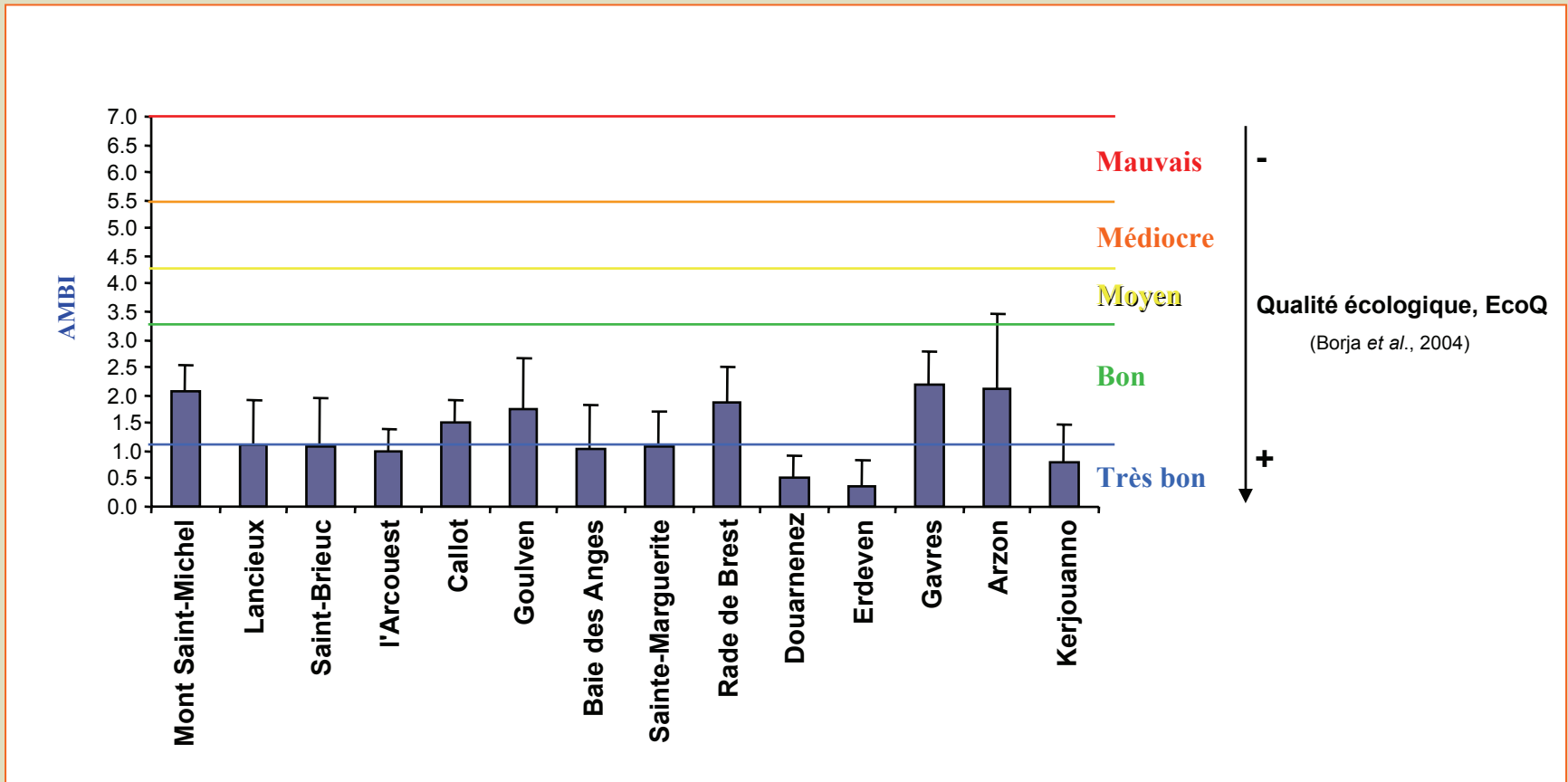


### □ Automne 2004



□ Printemps 2004

$$AMBI = \{(0 \times \%GI) + (1,5 \times \%GII) + (3 \times \%GIII) + (4,5 \times \%GIV) + (6 \times \%GV)\} / 100$$



□ Automne 2004

